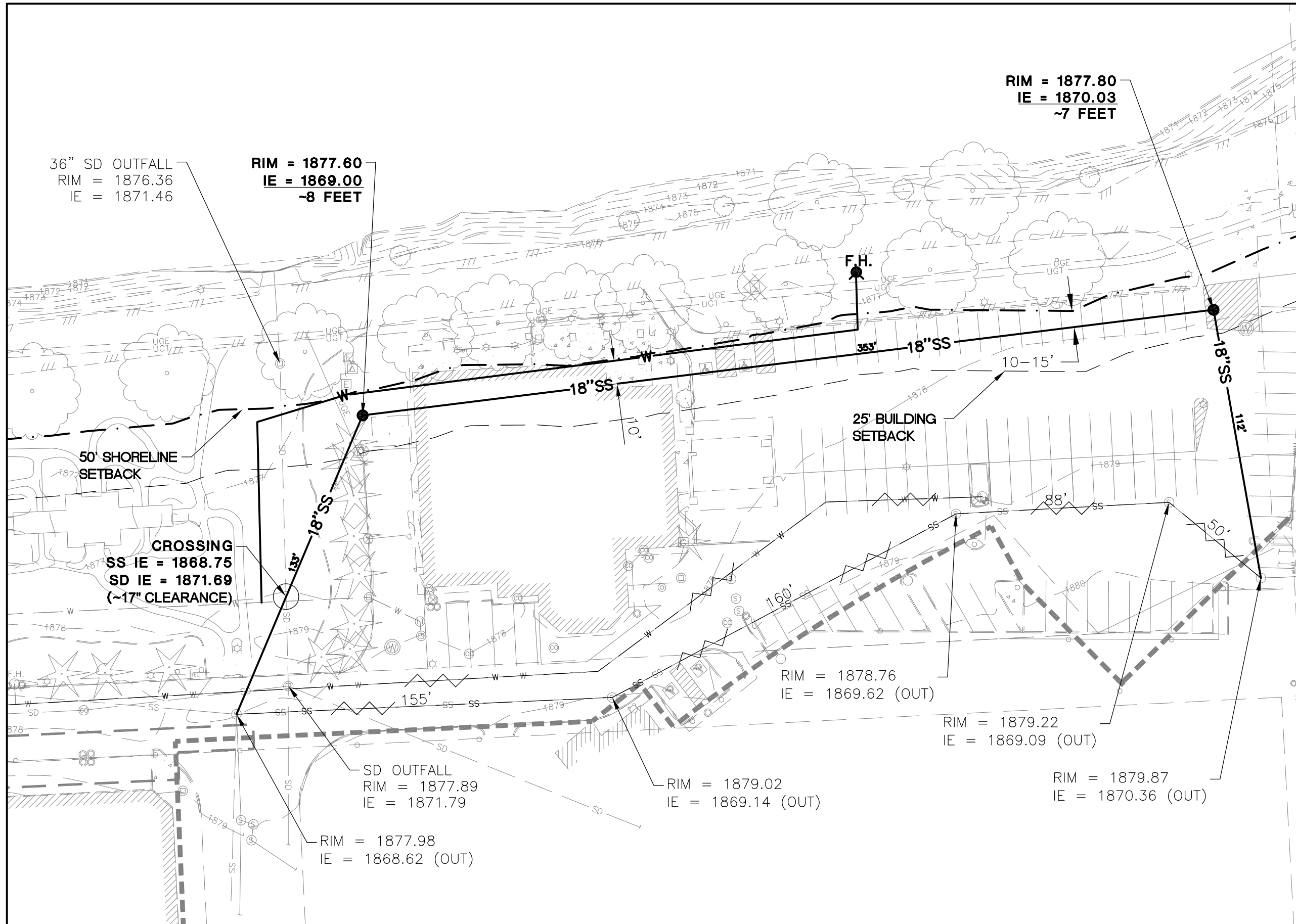


SCALE: 1"=40'

LEGEND

	TO BE ABANDONED
	PROPOSED SEWER
	PROPOSED WATER
	SHORELINE SETBACK
	BUILDING SETBACK



SEWER RELOCATION OPTION

**COFFMAN ENGINEERS**  
 10 N. Post Street Suite 500  
 Spokane, Washington 99201  
 509 328 2994 Fax 509 328 2999

project	Convention Center Completion	by	TJW	sheet no.	1
location	Spokane, WA	date	11/1/2012		
client		checked	TLA	job no.	12554
		date			



PROJECT: SPFD - Sewer Relocation Option  
 JOB NO.: # 12554

DATE: 10/17/12  
 BY: Ha

MEMO	to:	subject:
TELEPHONE CONVERSATION	with: N/A	Pub. Flow Calc's
SITE VISIT NOTES	location:	present: Sewer Relocation Option
MEETING NOTES	purpose:	

Existing:  
 453' 18" @ .004  
 n = .013

18" min = .0012 = 2fps - standards (min.)

.7D  
 3.6 fps  
 4.78 cfs  
 2147 gpm  
 3.09 mgd

Proposed:  
 605' 18" @ .003  
 n = .013

<u>.7D</u>	<u>Full</u>	<u>Proposed:</u> 12% red. in flow (288 gpm)
3.1 fps	3.2 fps	
4.14 cfs	5.66 cfs	
1859 gpm	2539	
2.68 mgd	3.61 mgd	

\* Per conversation & review by Bill Pearce of the City of Spokane (WW mg.); existing flows are less than 1/2 full. → He stated that the reduction in grade for the relocated sewer line as proposed (from .004 to .003 slope) was acceptable in terms of capacity.

T. Arnold  
 10/31/12